

DRESS WITH APRON FOR 18" KNIT DOLL

FRONT
CUT 2

1/4" (6MM) SEAM ALLOWANCES INCLUDED

1"

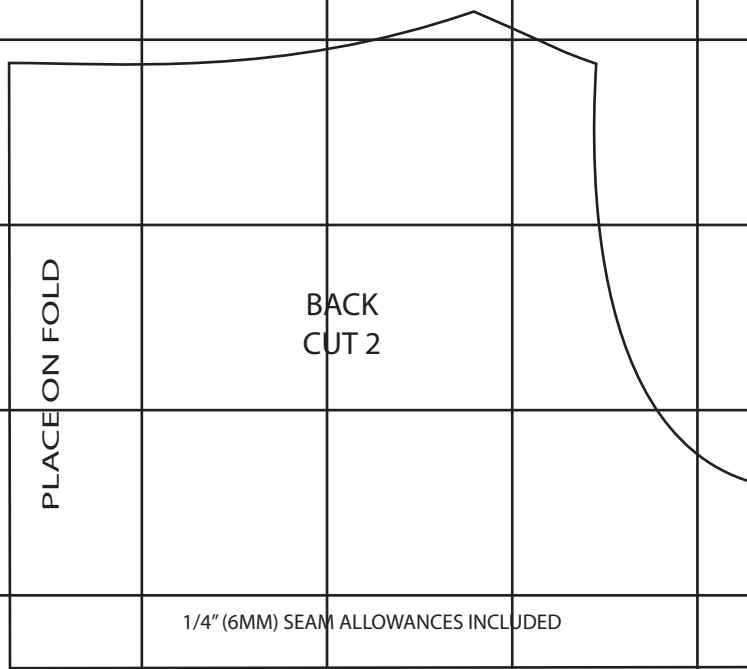
SLEEVE
CUT 2

1/4" (6MM) SEAM ALLOWANCES INCLUDED

COLLAR
CUT 4

1/4" (6MM) SEAM ALLOWANCES INCLUDED

DRESS WITH APRON FOR 18" KNIT DOLL



1"

CUTTING DIRECTIONS

SKIRT: 24" (61cm) x 8 1/4" (21cm)

SKIRT BAND: 24" (61cm) x 3" (7.5cm)

APRON: 6" (15cm) x 7 1/4" (18.5cm)

POCKET: 6" (15cm) x 4" (10cm)

CUFF (CUT 2): 6" (15cm) x 1 1/2" (4cm)

BIAS BINDING: 45" (115cm) x 1 1/8" (3cm)